



Caldecote Day Nursery



Newsletter December 2022

This month's Learning Focus: **Children's Interests, Christmas**

This month's Value: **Sharing**

Safeguarding

Safeguarding children's wellbeing is paramount for us at nursery. Here are some important safety messages for this time of year...

Make sure your tree is flameproof: If you're purchasing an artificial tree, check the packaging to make sure it is fire resistant; if you're having a live tree, bear in mind that chemical sprays to prevent needle-drop may be flammable.

Buy your live tree as late as possible and check it for freshness: A fresh tree is green, its needles are hard to pull from the branches and when bent between your fingers, the needles don't break. The trunk should be sticky with resin, and when you tap it on the ground the tree shouldn't shed many needles.

Position it carefully: When setting up a tree at home, place it away from fireplaces, radiators or portable heaters. Place the tree out of the way of traffic and don't block doorways.

Check all tree lights before hanging them on your tree, even if you've just purchased them: Make sure all the bulbs work and that there are no frayed wires, broken sockets or loose connections.

Avoid lights on a metallic tree: Never use electric lights on a metallic tree - the tree could become charged with electricity from faulty lights, and a person touching a branch could be electrocuted.

Turn off all lights when you go to bed or leave the house: There's a risk they could short out and start a fire.

Stick to flame-resistant decorations: Use only non-combustible or flame-resistant materials to trim a tree.

Never use lighted candles on a tree or near other evergreens: Always use non-flammable holders and place candles where they won't be knocked over.

Take special care to avoid decorations that are sharp or breakable: Keep trimmings with small removable parts out of the reach of children to avoid them from swallowing or inhaling small pieces and avoid trimmings that resemble sweets or food that may tempt a young child to eat them.

Remove wrapping paper, bags, paper, ribbons and bows from tree and fireplace areas after gifts are opened: These items can pose suffocation and choking hazards to a small child, or can cause a fire if near flame.

Don't burn gift wrap in the fireplace: A flash fire may result, as wrappings can ignite suddenly and burn intensely.

Clothing Reminders

- As the weather is getting colder, please remember to bring **warm coats, hats, gloves and scarves** for children, as they like to get outside in all weathers.
- Please also ensure that these are named so if they are lost, they can be returned.
- We have noticed that some children are arriving at nursery in shoes that are **too big**. While the children spend a majority of their time in socks or slippers, having well fitted shoes for outdoor times and beyond nursery is very important in the prevention of accidents. Wearing a shoe that is too big will also cause children to walk in an **unnatural and dysfunctional way** which can lead to serious foot problems.
- If you have borrowed any nursery clothes and not returned them, or you are having a clear out at home, we would appreciate donations of **socks, pants, trousers and leggings** for all ages please.



Lancaster Road, Rugby, CV21 2QN



01788 542337



www.caldecotedaynursery.co.uk



Caldecote Day Nursery



Newsletter December 2022

This month's Learning Focus: **Children's Interests, Christmas**

This month's Value: **Sharing**

Christmas Post Boxes – Monday 28th November – Wednesday 14th December

The festive post boxes will be available for you to send cards to nursery friends from Monday 28th November to Wednesday 14th December. Remember to put the child's name and room on the envelope. A list of names was emailed last week.



Stay & Play – Saturday 3rd December; 10am-12pm

We will be holding our Christmas 'Stay & Play' session on Saturday 3rd December, from 10am-12pm. Come along with your child and let them lead you through their learning at nursery. This session is open to all our current families, any younger or older siblings and two adults per child (due to space - sorry).

Staff will be on hand to have a chat with, and we hope it will be a fun way to see what goes on at nursery while engaging with your child in some festive themed invitations to learning. Please let us know if you will be attending.



Christmas Jumper Day & Christmas Parties - Friday 9th December

As well as being Christmas Jumper Day, this is also our Christmas Party Day! The party for Babies and Toddlers takes place between 11:30am-1pm and the Pre-School party is from 1:30pm-3:00pm. If your child does not usually attend on a Friday, they may attend the party at no additional charge. Please book a place with staff so we know how many we are catering for.



Pre-School Christmas Sing-a-long – Tuesday 13th or Thursday 15th December

Pre-School families (two adults per child) are invited to attend our Christmas Sing-a-long on Tuesday 13th December at 11am or Thursday 15th December at 2:00pm. This is a different format to our previous concerts and will be a relaxed and informal sing-a-long with your child and other families. Wear a Christmas jumper or festive headgear to get into the spirit! The whole session should last between 15-20 minutes. Don't forget to bring your best singing voices!

We had hoped to extend this to all rooms, but logistics will not allow for it this year. Many apologies.

Polite Reminders: Please be aware that we close at 6pm.

We always like to provide face to face feedback about your child's day but we have an increasing number of families arriving at 6pm for collection and then wanting five minutes of feedback. While we understand that you are busy working, please also be mindful that some staff are also just coming to the end of a ten hour shift too.

Polite Reminders: Please respect personal space.

We kindly ask that if a staff member is talking to a parent at the front door, that other parents please stand back, keep their distance and wait a moment. We understand that sometimes you might need to ask something quick, but staff may be in the middle of a sensitive or private conversation and there have been recent instances of other parents standing uncomfortably close.

Thank you for your support in these matters.



Lancaster Road, Rugby, CV21 2QN



01788 542337



www.caldecotedaynursery.co.uk



Caldecote Day Nursery



Newsletter December 2022

This month's Learning Focus: **Children's Interests, Christmas**

This month's Value: **Sharing**

Home Learning Ideas

Here are some ideas you could try with your child this month...

Talk about winter traditions in your family. Do you give gifts? Do you eat special food? How do you celebrate?

Go on a welly walk and see the season change. Look for bare trees and evergreen trees to compare.

Think about clothes that fit the weather. What do we wear in winter?

Try making our seasonal recipe of the month! Send us a photo of your efforts via ParentZone!

Don't forget to send us a photo of your home learning via ParentZone.



ParentZone

This month's seasonal recipe to try at home...

Savoury Shortbread Biscuits



Some families recently have noted that their children are becoming picky eaters. Try making this easy recipe with your child to get them involved with the preparation and then hopefully they will be more willing to tuck in!

Ingredients:

- 125g salted butter, softened, plus extra for the tray
- 125g plain flour, plus extra for dusting
- 40g sage & onion stuffing mix
- 30g parmesan or vegetarian alternative, finely grated, plus extra to serve

Method:

1. Heat the oven to 200C/180C fan/gas 6.
2. Tip the butter, flour, stuffing mix and cheese into a medium bowl and mix well into a dough.
3. Roll out the dough on a floured surface to a 5mm thickness and use a cutter of your choice to stamp out as many biscuits as you can. If needed, re-roll the trimmings and repeat until you've used up all the dough.
4. Transfer to a generously buttered baking tray and bake for 10-12 mins until lightly golden at the edges.
5. Leave to cool completely on the tray – they will firm up more as they cool. Scatter over another grating of cheese before serving.



Lancaster Road, Rugby, CV21 2QN



01788 542337



www.caldecotedaynursery.co.uk



Caldecote Day Nursery



Newsletter December 2022

This month's Learning Focus: **Children's Interests, Christmas**

This month's Value: **Sharing**

Leadership Focus

At nursery, we have several staff who take a leadership role. To raise their profile with parents and celebrate the good work that they do, each month we are going to highlight a different role and provide you with some information.

This month it is our Makaton Champions: Tiffany & Lauren T



Makaton song of the month...



Jingle bells



jingle bells



jingle



all the way.



Oh! What



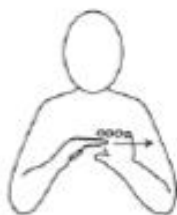
fun



it is



to ride



in



a one



horse

Move hands alternately as if holding reins

open sleigh.

At Caldecote, Tiffany (Pre-School) and Lauren T (Toddlers) are our Makaton Champions. They are trained to use Makaton and support other staff to use it on a daily basis with all the children in nursery.

As well as using our 16 basic signs, we also have a Makaton song of the month which helps children to learn a wider variety of signs and songs.

This month, we are singing 'Jingle Bells'.

Please see our website for our Makaton Advent Calendar so you can sign along at home.



Pudsey Party! – Friday 18th November
We raised £75 to send to Children In Need.
Thank you for your donations.



Lancaster Road, Rugby, CV21 2QN



01788 542337



www.caldecotedaynursery.co.uk



Caldecote Day Nursery



Newsletter December 2022

This month's Learning Focus: **Children's Interests, Christmas**

This month's Value: **Sharing**

Warwickshire School Admissions - September 2023

If your child was born between 1 September 2018 and 31 August 2019, then you have until 15 January 2023 to apply for their primary school place. If you miss this deadline, you are much less likely to get offered a place at a preferred school because you will be allocated a place after everyone who applied on time.

Where to start?

For a good introduction to the primary school application process, watch this handy video from Warwickshire County Council

(WCC): <https://www.youtube.com/watch?v=zLderSYccvY&list=PL9f3C4Fbo5T8jC5mcb2uQ89KPBjvXGox7&index=5>

There's a range of useful information on the WCC website to help you to decide on which schools to include on your application. This includes a list of all the Warwickshire schools - <https://apps.warwickshire.gov.uk/findaschool> - with links to their websites and admission policies as well as a map that shows you the priority areas for each school.

For general guidance on choosing schools to include on your application, visit www.warwickshire.gov.uk/primaryplace. You can learn a lot about each school from their individual websites, but it's always a good idea to go and visit them in person too. That way you can meet the staff and get a better understanding of whether it would be the right place for your child.

Meet the Admissions Team Online

The school admissions team are also running to webinars for parents and carers of children who are due to start school next year. These are free to join and are a great opportunity to learn more about the process and what you can do to submit a successful application by the deadline. There's two dates to choose from and everyone who books a place will receive a recording of the event. Book your place here:

- [Thursday 1 December at 7pm](#)
- [Tuesday 6 December at 7pm](#)

Ready to apply?

Once you are ready to apply, the most important thing you can do is to make realistic choices of the schools you choose. Whilst you don't have to use all your

six possible preferences on your application form, WCC strongly recommend that you include at least three schools to maximise your chances of getting an offer for one of your preferences. Those families that only apply to one school are the most likely to be disappointed on National Offer Day (17 April) with an offer of a school place that they didn't choose.



Please visit www.warwickshire.gov.uk/primaryplace for more guidance on how to submit your application by the 15 January deadline.

If you need more help...

For the majority of families, applying to primary school is fairly straightforward. However, if you need additional help for any reason, you can request this by filling out a short online form at www.warwickshire.gov.uk/schoolplacehelp. Once you've done that, one of the WCC team will get in touch with you.



Lancaster Road, Rugby, CV21 2QN



01788 542337



www.caldecotedaynursery.co.uk



Caldecote Day Nursery



Newsletter December 2022

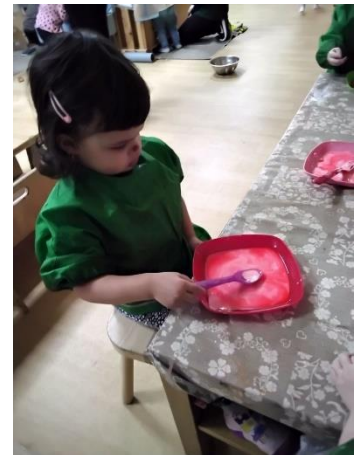
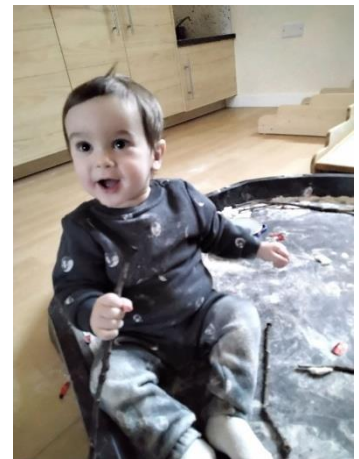
This month's Learning Focus: **Children's Interests, Christmas**

This month's Value: **Sharing**

Staffing News...

Since the term began in September, we have said goodbye and hello to staff. Carola left us after four years of service in September to take up a full time post, teaching Spanish in a secondary school and Poppy is sadly leaving us at the end of the month as she is relocating to be closer to family. We wish them both well in their new roles. Lily M left us to start maternity leave in November and Tiffany finishes in a week to begin her maternity leave. We wish them lots of luck and will update with any news! In the meantime, we have welcomed some new faces to the team as in the last few weeks as Shakira, Lexi and Tiberia (known as Tibi) have joined us.

Our November Learning...



As we approach the end of the year, we just wanted to take the time to thank you all for your continued support. And a special thanks to the children who continue to amaze us with their confidence, resilience, and strong friendships with each other. You truly are amazing!



We would like to wish you all a very Merry Christmas and a peaceful New Year.

Love Mariana, Pamela and all the team at Caldecote Day Nursery.



Lancaster Road, Rugby, CV21 2QN



01788 542337



www.caldecotedaynursery.co.uk